

**Summary of CSO Receiving Water
Quality Monitoring in
Upper Mystic River/Alewife Brook
and Charles River, 2006**

Massachusetts Water Resources Authority

Environmental Quality Department
Report ENQUAD 2007-05



Citation

Coughlin, Kelly. 2007. **Summary of CSO Receiving Water Quality Monitoring in Upper Mystic River/Alewife Brook and Charles River, 2006.** Boston: Massachusetts Water Resources Authority. Report ENQUAD 2007-05. 37 p.

**Summary of CSO Receiving Water Quality Monitoring
in Upper Mystic River/Alewife Brook
and Charles River, 2006**

Prepared by:

Kelly Coughlin
Environmental Quality Department, Operations Division
Massachusetts Water Resources Authority
100 First Avenue, Boston, MA 02129

May 2007

Environmental Quality Department Technical Report 2007-05

TABLE OF CONTENTS

1	INTRODUCTION	1
1.1	OVERVIEW OF THE MONITORING PROGRAM	3
1.2	ORGANIZATION AND PURPOSE OF THE REPORT	3
2	MATERIALS AND METHODS	3
2.1	FIELD AND LABORATORY METHODS	3
2.1.1	<i>Selection of sampling locations</i>	3
2.1.2	<i>Sampling schedule</i>	3
2.1.3	<i>Sample collection</i>	3
2.1.4	<i>Field measurements</i>	4
2.1.5	<i>Rainfall measurements</i>	4
2.1.6	<i>Laboratory analyses</i>	4
2.2	DATA ANALYSIS	5
2.3	WATER QUALITY CRITERIA USED IN THIS REPORT	6
3	CHARLES RIVER	9
3.1	SAMPLING AREA	9
3.2	POLLUTION SOURCES	10
3.3	SUMMARY OF WATER QUALITY, 1998-2006	11
3.4	TRENDS IN WATER QUALITY, 2006	14
3.4.1	<i>Physical measurements</i>	14
3.4.2	<i>Nutrients, TSS and chlorophyll</i>	16
3.4.3	<i>Bacterial water quality</i>	18
3.5	SUMMARY OF CHARLES RIVER WATER QUALITY	22
4	MYSTIC RIVER AND ALEWIFE BROOK	23
4.1	SAMPLING AREA	23
4.2	POLLUTION SOURCES	24
4.3	SUMMARY OF WATER QUALITY, 1998-2006	25
4.4	TRENDS IN WATER QUALITY, 2006	28
4.4.1	<i>Physical measurements</i>	28
4.4.2	<i>Nutrients, TSS and chlorophyll</i>	30
4.4.3	<i>Bacterial water quality</i>	32
4.5	SUMMARY OF MYSTIC RIVER WATER QUALITY	36
	REFERENCES	37

LIST OF TABLES

Table 2-1. Parameters measured.....	4
Table 2-2. Variables measured.....	5
Table 2-3. Water quality criteria for Class B and Class SB waters.	7
Table 3-1. MWRA monitoring locations, lower Charles River.	10
Table 3-2. Charles River pollution sources.....	11
Table 3-3. Summary of water quality, lower Charles River Basin 1998 – 2006.	12
Table 3-4. Geometric mean indicator bacteria, Charles River, 1998 – 2006.....	20
Table 4-1. MWRA monitoring locations, Mystic River and Alewife Brook.....	24
Table 4-2. Mystic River/Alewife Brook pollution sources.....	25
Table 4-3. Summary of water quality, Mystic River/Alewife Brook 1998 – 2006.....	26
Table 4-4. Geometric mean indicator bacteria, Mystic River, 1998 – 2006.....	34

LIST OF FIGURES

Figure 1-1. Estimated CSO flow reductions, 1987 – 2015	2
Figure 3-1. Map of MWRA Charles River sampling locations	9
Figure 3-2. Summer temperature,dissolved oxygen, and Secchi depth, Charles River Basin, 2006.	15
Figure 3-3. Monthly average nutrients, TSS and Chlorophyll 1998 – 2006, Charles River.....	17
Figure 3-4. Indicator bacteria concentrations, Charles River Basin, 2006.	19
Figure 3-5. <i>Enterococcus</i> by rainfall condition, Charles Basin, 1998 - 2006.....	21
Figure 4-1. Map of Mystic River sampling locations	23
Figure 4-2. Summer temperature,dissolved oxygen, and Secchi depth, Lower Mystic, 2006.....	29
Figure 4-3. Monthly average nutrients, TSS and Chlorophyll 1998 – 2006, Mystic River.....	32
Figure 4-4. Indicator bacteria concentrations, Mystic River/Alewife Brook, 1998 - 2006.....	34
Figure 4-5. <i>Enterococcus</i> by rainfall condition, Mystic River/Alewife Brook, 1998 - 2006.	35

1 Introduction

This report presents a summary of data collected as part of MWRA's ongoing combined sewer overflow (CSO) receiving water monitoring program. The goal of this monitoring is to identify the water quality impacts of CSO flows on water bodies.

2006 Developments. In calendar year 2006, MWRA continued implementing its Long Term CSO Control Plan with a high level of design and construction activity. In March 2006, MWRA reached agreement with the U.S. Environmental Protection Agency (EPA), the Massachusetts Department of Environmental Protection (MADEP), and the U.S. Department of Justice on a revised scope and schedule for CSO projects, including project changes and schedule changes since the plan was released in 1997. The revisions included modified and/or additional milestones for projects in the Alewife Brook, Charles River and East Boston CSO plans. Under the approved plan, MWRA will implement its revised recommended plan for Alewife Brook/Mystic River and the Charles River, including additional work that will further reduce CSO discharges to the Charles River. The estimated cost of this additional work is approximately \$20 million and is expected to further reduce treated CSO discharges at MWRA's Cottage Farm CSO Facility to two activations and 6.3 million gallons in a typical year.

Other 2006 CSO progress as it relates to the Alewife Brook/Mystic River and Charles River consisted of:

- With MWRA funding, Boston Water and Sewer Commission (BWSC) completed construction of the \$45.1 million Stony Brook Sewer separation project in September 2006, greatly reducing CSO discharges to the Stony Brook Conduit, which ultimately discharges to the Charles River.
- MWRA issued a Notice to Proceed for a \$1.3 million design contract for the Brookline Connector, the Cottage Farm overflow chamber interconnector and Cottage Farm control gate in September 2006. The total project cost is \$4.3 million.
- BWSC issued a Notice to Proceed for design of the Bullfinch Triangle sewer separation project in August 2006. The total project cost, funded by MWRA, is \$4.4 million and will reduce CSO discharges to the Charles River.
- The Town of Brookline issued a Notice to Proceed for a design contract for the Brookline sewer separation project. The total project cost, funded by MWRA, is \$9 million and will result in reductions in CSO discharges to the Charles River.
- The City of Cambridge continued to make progress with the design of floatables controls, with funding provided by MWRA, for its CSO outfalls on the Charles River. The total cost of Cambridge floatables control for both the Charles River and Alewife Brook is \$2.9 million.
- Cambridge continued its efforts to respond to a citizen's appeal of a Superceding Order of Conditions for the wetlands basin and stormwater outfall associated with the Alewife Brook CSO control project.

Background. System improvements such as increased pumping capacity at Deer Island Treatment Plant have reduced the frequency and volume of CSO flows over the period of the monitoring program. Other improvements include: upgrades to MWRA’s pumping and interceptor systems; completion of nine minimum controls; completion of system optimization projects, and implementation of some of MWRA’s CSO control projects have significantly reduced the frequency and volume of CSO flows over the period of the monitoring program and has resulted in increased treatment of remaining flows. Figure 1-1 shows the estimated CSO flow reduction system-wide since 1987. For purposes of this report, receiving water quality data from 1998 to the present is considered representative of current conditions.

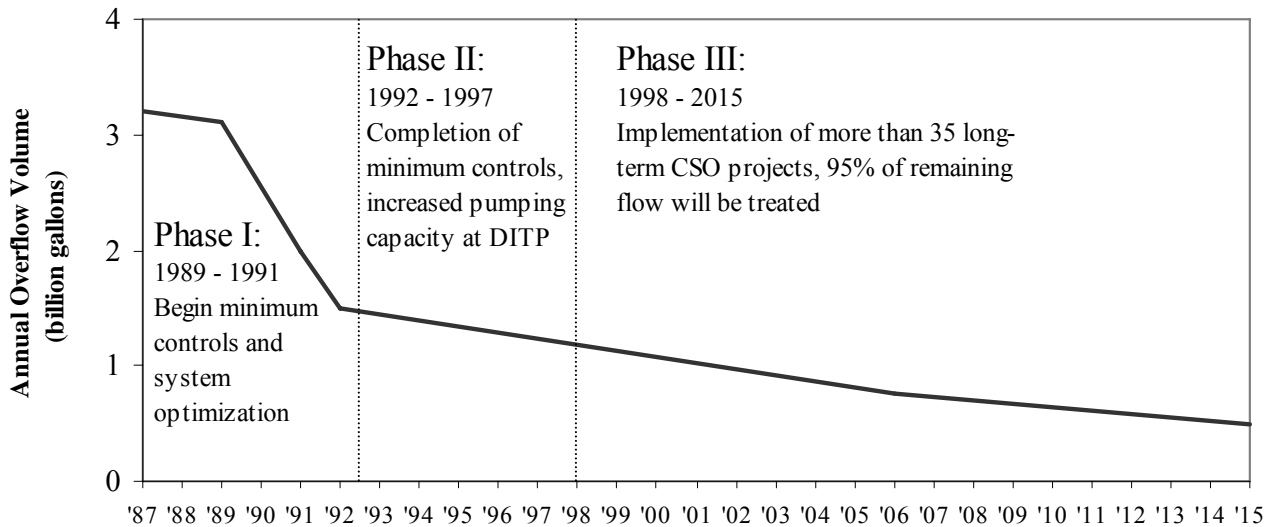


Figure 1-1. Estimated CSO flow reductions, 1987 – 2015.

Source: MWRA 2006 Annual CSO Progress Report

1.1 Overview of the monitoring program

MWRA's CSO receiving water quality monitoring program has been ongoing since 1989. All harbor and tributary areas impacted by CSOs in Boston, Chelsea, Cambridge, and Somerville are included in the monitoring program. For most sampling locations included in this report, at least 20 samples have been collected each year for at least six years.

1.2 Organization and purpose of the report

Chapter 2 presents the materials and methods used in monitoring. Chapters 3 and 4 of this report discuss the results of the CSO receiving water quality monitoring program in the Charles River and Mystic River/Alewife Brook. Water quality parameters examined for each region include: bacterial indicators (*E. coli*, *Enterococcus* and fecal coliform), dissolved oxygen, water clarity (Secchi depth, total suspended solids), nutrients (phosphate, ammonium, nitrate/nitrite) and chlorophyll.

The purpose of the report is to summarize water quality in the Charles and Alewife Brook/Mystic River. The report compares sampling results to water quality standards, and shows spatial and temporal variations in water quality, and differences between wet and dry weather. Data from 1998 – 2006 are analyzed together, and data for 2006 for bacterial and physical parameters are also shown separately.

2 Materials and Methods

2.1 Field and laboratory methods

2.1.1 Selection of sampling locations

Some sampling locations were chosen for their proximity to CSO discharges and others were chosen to provide representative water quality measurements for a given area. A complete list of stations, with descriptions for the Charles and Mystic River/Alewife Brook appear in Section 3.1 and 4.1, respectively.

2.1.2 Sampling schedule

Approximately 20 station visits or more were made to each location each year. Sampling was random with respect to weather, however efforts were made to collect additional samples during wet weather, if an inadequate number of station visits occurred following rainfall events. In some cases, stations with known contamination problems were specifically targeted for wet weather sampling.

2.1.3 Sample collection

At all locations, water samples and water quality measurements were collected near-surface (approximately 0.1 meters below surface). Surface samples were collected by grab, directly into rinsed sample containers. Bottom samples were collected with a Kemmerer sampler at 0.5 meters above the sediment surface at locations deeper than approximately 4 meters. Beginning in 2000, bottom water quality measurements were made at most locations regardless of depth. Separate sampling containers were used for bacteria, nutrient, and TSS analyses.

2.1.4 Field measurements

Field measurements were made with different instruments over the course of the monitoring program. Table 2-2 lists the instruments used and the variables measured.

Table 2-1. Field measurements.

Variable	Instruments used
Temperature, conductivity/salinity, dissolved oxygen, turbidity, pH	YSI model 3800 Water Quality Logger (1994 - 2001) Hydrolab Datasonde 4 (1997-2006) Hydrolab Datasonde 5 (2003 - 2006) YSI 600XL for temperature, conductivity, dissolved oxygen (1999 – 2006)
Secchi Depth	Wildco 8-inch limnological secchi disk (upstream of dams) Wildco 8-inch oceanographic secchi disk (marine waters)

2.1.5 Rainfall measurements

Rainfall measurements were taken from the National Weather Service (NWS) rain gauge located at Logan Airport in East Boston, as this was considered the most representative location for the entire monitoring area. Results from the gauge are reported in one-day intervals. Data are downloaded from the NWS website and stored in MWRA's EM&MS database.

2.1.6 Laboratory analyses

Samples were analyzed at the MWRA Central Laboratory. For enumeration of bacteria, nutrients, and TSS, MWRA Department of Laboratory Services Standard Operating Procedures are followed.

Detailed laboratory methods with quality assurance and quality control procedures are described in the Central Laboratory Standard Operating Procedure (MWRA 2003).

Table 2-3 lists the analytes measured and methods used in the monitoring program.

Table 2-2. Laboratory measurements.

Analyte	Method
<i>Enterococcus</i>	Standard Methods 9230C 2c, membrane filtration (for samples collected 1996 – 1998) EPA Method 1600 (for samples collected 1999–2006)
<i>E. coli</i> (measured from 2001 – 2006)	Modified EPA 1103.1, membrane filtration
Fecal coliform (limited measurements after 2001)	Standard Methods 9222D, membrane filtration
Total suspended solids	Clesceri et al. (1998, Method 2540D), using nucleopore filters
Total phosphorus	TP and/or TDP: Solarzano and Sharp (1980a); PP: Solarzano and Sharp (1980a), Whatman GF/F
Phosphate	Murphy and Riley (1962), modified as in Clesceri et al (1998, Method 4500-P F) Skalar SAN ^{plus} autoanalyzer, Whatman GF/F filters
Total Nitrogen	TN and/or TDN: Solarzano and Sharp (1980b), Whatman G/F filters; PN: Perkin Elmer CHN analyzer, Whatman GF/F
Ammonium	Fiore and O’Brien (1962), modified as in Clesceri et al (1998, Method 4500-NH3 H), Skalar SAN ^{plus} autoanalyzer, Whatman GF/F filters
Nitrate+nitrite	Bendshneider and Robinson (1952), modified as in Clesceri et al (1998, Method 4500- NO3 F), Skalar SAN ^{plus} autoanalyzer, Whatman GF/F filters
Chlorophyll <i>a</i>	Acid-corrected (Holm Hansen 1965) as described in EPA (1992). Sequoia Turner Model 450 fluorometer, GF/F filters

2.2 Data analysis

Descriptive Analyses. Indicator bacteria counts are typically log-normally distributed, and therefore a proper measure of central tendency for these data is the geometric mean. Geometric means and their associated 95% confidence intervals were calculated for the measurements made at each station over the sampling period.

Many results are plotted as percentile plots, as shown in Figure 2-1.

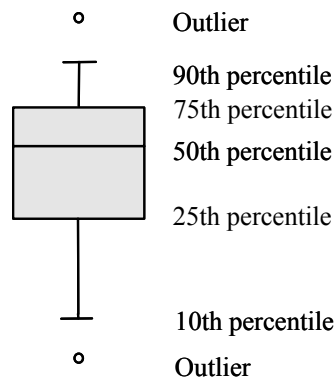


Figure 2-1. Percentile distributions indicated on percentile plots

These plots present a frequency distribution of a group of measurements. Each box comprises measurements from a single beach or sampling location. Values are shown in Figure 2-1 for the 10th, 25th, 50th, 75th, and 90th percentiles. Single measurements beyond these ranges (outliers) are displayed as dots.

The plots display the range and central tendencies of the data to be seen and allow for easy comparison of the results among stations. Since part of the Massachusetts standard is a percentile, these plots are particularly appropriate (see Section 2.3 for a description of these guidelines). The 50th percentile or median is equivalent to the geometric mean, assuming the data are log-normally distributed.

Graphic and statistical analyses were performed using Excel (Microsoft Corp., Redmond, WA) and Statview (SAS, Inc., Cary, NC). Figures were generated using Statview, Excel and PowerPoint (Microsoft Corp., Redmond, WA).

2.3 Water Quality Standards used in this report

Standards are shown in Table 2-6, and include standards and guidelines from the Massachusetts Department of Environmental Protection (MADEP), Environmental Protection Agency (EPA), Massachusetts Department of Public Health (MADPH), and the Massachusetts Division of Marine Fisheries (MADMF). As of December 2006, the MADEP standard for Class SB waters (fishable swimmable) are based on fecal coliform counts, while the USEPA recommends using *Enterococcus* in marine waters (USEPA 1986). The Massachusetts Department of Public Health has issued regulations for beach management based on the USEPA criteria.

Table 2-3. Water quality standards for Class B and Class SB waters¹.

Designated Use/Standard	Parameter	Support
Inland waters, Class B, warm water fishery Massachusetts waters, MADEP	Dissolved Oxygen	≥ 5.0 mg/l ≥ 60% saturation unless background conditions lower
	Temperature	≤ 28.3°C (83°F)
	pH	6.0 to 8.3 S.U.
Coastal/marine waters, Class SB Massachusetts waters, MADEP	Dissolved Oxygen	≥ 5.0 mg/L ≥ 60% saturation unless background conditions lower
	Temperature	< 26.7°C (80°F)
	pH	6.5 to 8.5 S.U.
Primary contact recreation (designated swimming area), EPA and MADPH guidelines	<i>Enterococcus</i>	Single sample limit 61 colonies/100 ml (freshwater), 104 colonies/100 ml (marine); geometric mean 33 colonies/100 ml (freshwater), 35 colonies/100 ml (marine)
Primary contact recreation (designated swimming area), EPA and MADPH guidelines	<i>E. coli</i>	Single sample limit 235 colonies/100 ml (freshwater only); geometric mean 126 colonies/100 ml (freshwater only)
Primary contact recreation, Massachusetts MADEP	Fecal coliform	Geometric mean ≤ 200 colonies/100 ml, no more than 10% of samples above 400 colonies/100 ml
Restricted shellfishing, Massachusetts MADMF	Fecal coliform	Geometric mean ≤ 88 colonies/100 ml

¹ **All receiving water areas discussed in this report are either Class B or SB according to MADEP standards current as of December 2006 (MADEP 1996):**

Inland Water Class B: These waters are designated as a habitat for fish, other aquatic life, and wildlife, and for primary and secondary contact recreation. Where designated they shall be suitable as a source of water supply with appropriate treatment. They shall be suitable for irrigation and other agricultural uses and for compatible industrial cooling and process uses. These waters shall have consistently good aesthetic value.

Coastal and Marine Class SB: These waters are designated as a habitat for fish, other aquatic life, and wildlife, and for primary and secondary contact recreation. In approved areas they shall be suitable for shellfish harvesting with depuration (Restricted Shellfishing Areas). These waters shall have consistently good aesthetic value.

(This page is intentionally blank for printing purposes)

3 Charles River

3.1 Sampling area

MWRA’s sampling area in the Charles River includes the river segment from the Watertown Dam in Watertown downstream to the New Charles River Dam in Boston, near the river mouth. This area for purposes of this report called the Charles Basin, is freshwater and designated Class B with a variance for Combined Sewer Overflows by MADEP (the variance was re-issued in 2004). The river segment is approximately 10.3 km (8.6 mi) long. The New Charles Dam and locks limit river flow and tidal exchange at the river mouth. MWRA monitoring locations are primarily located midstream, bracketing CSO outfalls. Locations were also selected near to or downstream of outfalls where accessible by boat: at Stony Brook outlet and CSO (MWR023), Faneuil Brook outlet and CSO (BOS032, closed in 1997), and downstream of the Cottage Farm CSO outfall diffusers (MWR201).

For purposes of this report, MWRA’s monitoring area in the lower Charles is divided into three smaller reaches. Table 3-1 describes the reaches, sampling locations and CSOs within each reach. Sampling locations and CSOs appear in Figure 3-1.

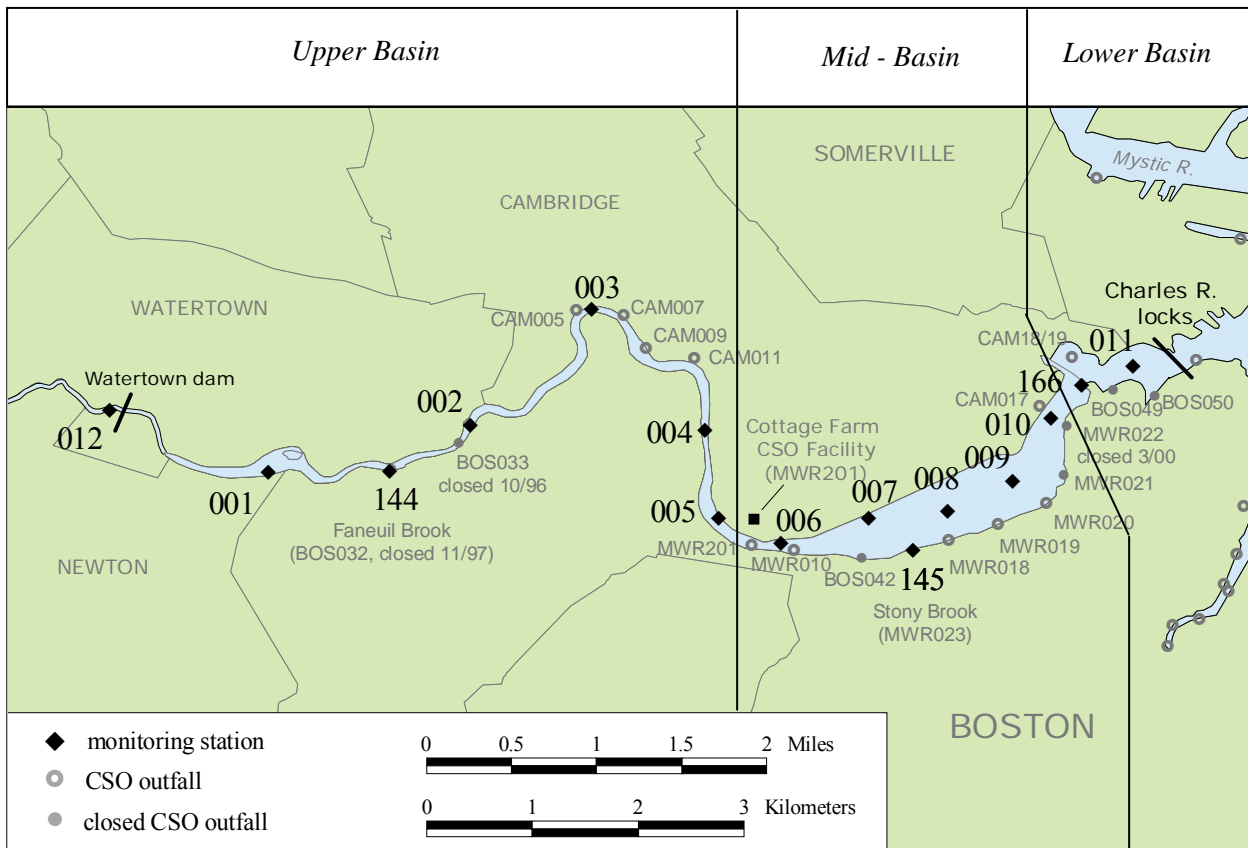


Figure 3-1. Map of MWRA Charles River sampling locations

Table 3-1. MWRA monitoring locations, Charles River Basin.

Reach	Description of Reach	Sampling location	Location Description
Upper Basin (Class B/ Variance, warm water fishery)	Watertown dam in Watertown, downstream to Magazine Beach (near BU Bridge) in Cambridge	012, Watertown	Watertown Dam at footbridge (upstream of all CSOs)
		001, Newton	Downstream of Newton Yacht Club (upstream of all CSOs)
		144, Allston	Faneuil Brook outlet (at BOS032, closed 11/97)
		002, Allston	Downstream of Beacon St. bridge (downstream of BOS033, closed 10/96)
		003, Cambridge	Downstream of Eliot Bridge, Cambridge side (at CAM005)
		004, Cambridge/Allston	Between River St. and Western Ave. bridges
		005, Cambridge	10 m off of Magazine Beach
Mid-Basin (Class B/Variance, warm water fishery)	BU Bridge on Boston/Cambridge line to downstream of Longfellow Bridge	006, Cambridge/Boston	BU Bridge, downstream side (downstream of MWR201)
		007, Cambridge	MIT Boathouse, Cambridge side
		145, Boston	Stony Brook outlet, Boston side (at MWR203)
		008, Cambridge/Boston	Mass. Ave bridge, downstream side (downstream of MWR203, MWR018)
		009, Cambridge/Boston	Longfellow Bridge, upstream side (downstream of MWR021, closed 3/00)
Lower Basin (Class B/Variance, warm water fishery)	Science Museum to North Station railroad bridge, near Charlestown.	010, Boston	Longfellow Bridge, downstream side (downstream of MWR022, closed 3/00)
		166, Boston	Science Museum, upstream of old dam (downstream of all lower basin CSOs)
		011, Boston	Between Science Museum and New Charles Dam/locks (downstream of all Charles CSOs)

Sampling locations are midstream unless otherwise noted. Sampling at stations 002, 003, and 004 was restored after a hiatus from 2002 - 2005.

3.2 Pollution sources

Known pollution sources to the Charles River are shown in Table 3-2. Contamination upstream of the Watertown Dam has been evident since MWRA's monitoring program began in 1989. MWRA's Cottage Farm CSO treatment facility, located upstream of the BU Bridge, screens, chlorinates and dechlorinates CSO flow before discharge and is the only source of treated CSO discharge to the river. With increases in sewer system capacity, the number of activations at Cottage Farm has significantly decreased in recent years – from 26 activations in 1996 to an average of 10 activations per year for calendar years 2005-2006. The Stony Brook/Muddy River outlet near Kenmore Square is a source of contaminated brook flow and large volumes of untreated CSO flows to the basin area. In 2006, BWSC completed the Stony Brook sewer separation project at a cost of \$45.1 million, reducing annual CSO discharge volumes to the Stony Brook by 99.7%. Numerous illicit connections in the river basin and upstream of the basin have been identified and eliminated

during the monitoring period, an improvement reflected in the dry and wet weather bacterial monitoring results shown later in this report.

Table 3-2. Charles River Basin pollution sources.

Source	Upper Basin	Mid-Basin	Lower Basin
CSOs (untreated)	4 active, 2 closed CAM005, CAM007, CAM009, CAM011 BOS032 closed 11/97 BOS033 closed 10/96	6 active, 3 closed MWR010, MWR023, MWR018, MWR019, MWR20, CAM017 BOS042 closed 5/96 MWR021 closed 3/00 MWR022 closed 3/00	1 active BOS049 (to be closed)
CSO treatment facility (settling and detention; screened, chlorinated and dechlorinated CSO discharge)	No	Yes Cottage Farm (MWR201)	No
Storm drains	Yes	Yes	Yes
Upstream inputs (elevated bacteria counts upstream)	Yes	Yes	Yes
Dry weather inputs (elevated bacteria counts in dry weather)	Yes	Yes	Yes
Tributary brook or stream flow	Yes	Yes	Yes

3.3 Summary of water quality, 1998-2006

A detailed summary of water quality results collected from 1998 through 2006 is shown in Table 3-3.

Table 3-3. Summary of water quality, Charles River Basin 1998 – 2006.

Parameter		Water Quality Statndard or Guideline	Upper Basin				Mid-Basin				Lower Basin			
			Mean ± SD	% meeting guideline	Range	n	Mean ± SD	% meeting guideline	Range	n	Mean ± SD	% meeting guideline	Range	n
Surface Temperature (°C) ¹	Summer	<28.3	20.8 ± 4.6	99.1	7.2 - 29.3	1084	21 ± 4.1	98.6	8.8 - 29.8	1337	21.5 ± 4.4	94.9	11.2 - 30.2	567
	Winter		2.8 ± 3.1	100.0	-1.1 - 15.6	171	ND	ND	ND	0	3.3 ± 2.8	100.0	-1.5 - 13.7	158
Bottom water dissolved oxygen (mg/L) ¹	Summer	5.0	7.5 ± 1.8	92.6	0.2 - 13.6	1058	5.6 ± 3	68.3	0 - 11.5	1298	6.8 ± 2.4	80.3	0.3 - 13.1	559
	Winter	5.0	13.4 ± 1.4	100.0	5.5 - 16.1	170	ND	ND	ND	0	12.6 ± 1	100.0	10.1 - 15.8	156
pH (S.U.)		6.5-8.3	7.2 ± 0.4	96.4	5.3 - 9.2	1671	7.3 ± 0.5	95.1	6 - 9.1	2017	7.4 ± 0.5	92.1	5.1 - 9.5	952
Water clarity	Total Suspended Solids (mg/L)	NS	5 ± 2.9	-	0.5 - 19.3	351	ND	-	ND	0	4.3 ± 2.1	-	0.7 - 12.8	348
	Secchi depth (m)	NS	0.9 ± 0.3	-	0.3 - 2.1	568	1 ± 0.3	-	0.3 - 6	1151	1.2 ± 0.3	-	0.4 - 2.2	223
	Turbidity (NTU)	NS	5.8 ± 4.6	-	0 - 36.1	977	7.3 ± 5.2	-	0 - 42.5	1463	4.1 ± 4.1	-	0 - 45.2	634

Table 3-3. Summary of water quality, Charles River Basin 1998 – 2006, continued.

Parameter		Water Quality Statndard or Guideline	Upper Basin				Mid- Basin				Lower Basin			
			Mean ± SD	% meeting guideline	Range	n	Mean ± SD	% meeting guideline	Range	N	Mean ± SD	% meeting guideline	Range	n
Bacteria (col/100mL) ²	Fecal coliform (1998 – 2000)	200 / 400 ³	228 (203-257)	48.0	0 - 158000	688	80 (71-90)	57.2	0 - 43300	876	49 (42-58)	68.3	0 - 18200	407
	<i>E. coli</i> (2001- 2006)	126 / 235 ^{3,4}	223 (197-254)	43.7	0 - 12300	547	73 (65-82)	71.0	0 - 34400	1046	437 (37-51)	79.9	0 - 10500	379
	<i>Enterococcus</i>	33 / 61 ³	84 (75-93)	38.9	0 - 17600	1227	16 (15-18)	69.3	0 - 9200	1913	13 (11-15)	75.1	0 - 8900	782
Nutrients (µmol/L)	Phosphate	NS	0.75 ± 0.43	-	0.11 - 3.01	349	ND	-	ND	0	0.73 ± 0.53	-	0.04 - 3.63	341
	Ammonium	NS	5.8 ± 4.4	-	0.2 - 42.9	350	ND	-	ND	0	9.2 ± 6.8	-	0 - 32.1	342
	Nitrate+nitrite	NS	39 ± 19.5	-	0 - 99.3	348	ND	-	ND	0	36.3 ± 20.5	-	0.1 - 107.1	340
Algae (µg/L)	Chlorophyll	25 ⁵	7.5 ± 7.2	95.2	0.6 - 37.6	336	ND	ND	ND	0	14.9 ± 14.5	81.8	0.7 - 112	329

NS: no standard or guideline. ND: No data. ¹: Summer (June-September), Winter (December-March).

²: For bacterial data, 95% confidence intervals are provided in lieu of standard deviations.

³: First number is the all samples geometric mean limit - compare to the "Mean±SD" column; the second number is the single sample limit - compare to the "% meeting guideline" column. For fecal coliform, MADEP has an additional limit in that more than 90% of single samples must meet the single sample limit of 400 colonies/100mL.

⁴: *E. coli* standard is the Massachusetts Department of Public Health standard for swimming in fresh water.

⁵: NOAA guideline.

3.4 Trends in water quality, 2006

This section provides an analysis of spatial trends for each water quality parameter measured in the lower Charles in the 2006 monitoring year.

3.4.1 Physical measurements

Temperature. Summer mean temperatures for 2006 are shown for each sampling location in the top graph in Figure 3-2. Temperature profiles are relatively consistent upstream to downstream, with bottom-water temperatures relatively low in the deepest stations, 009 and 010, where depths average 6 to 7 meters (20 to 23 feet). Station 166 is collected in a shallow location in the basin near the Science Museum where differences in surface and bottom temperatures are negligible.

Dissolved Oxygen. The spatial trend in dissolved oxygen (DO) in the Charles Basin differs dramatically for surface and bottom waters, shown in the center graph of Figure 3-2. Mean surface DO meets the State standard of 5.0 mg/L at all locations at the surface, but mean bottom water DO consistently fails to meet the standard at all but the upper basin locations. Stratification (due to salt water intrusion through the river locks during the summer months, as well as cooler bottom temperatures) results in extremely low bottom-water dissolved oxygen in the lower basin area near the Longfellow Bridge (Stations 009 and 010). Station 166, downstream of the lower basin, is collected at a relatively shallow near-shore location and does not reflect the low levels of deeper water. Station 011 has the highest bottom water salinity of any of the locations (data not shown), but does have slightly higher dissolved oxygen levels than basin locations located further upstream – likely reflecting the influence of more highly oxygenated ocean water infiltrating the New Charles Dam.

Water clarity. Water clarity is indicated by Secchi disk depth, these results shown for individual sampling locations in the bottom graph in Figure 3-2. Because of its shoreline location, Secchi disk depths are not measured at Station 166. In general, there is a pattern of increasing water clarity from upstream to downstream, as the river widens and slows in the lower Basin. Most Secchi depths average approximately 1.0 meter in the summer months, which fails to meet the State guideline of 1.2 meters.

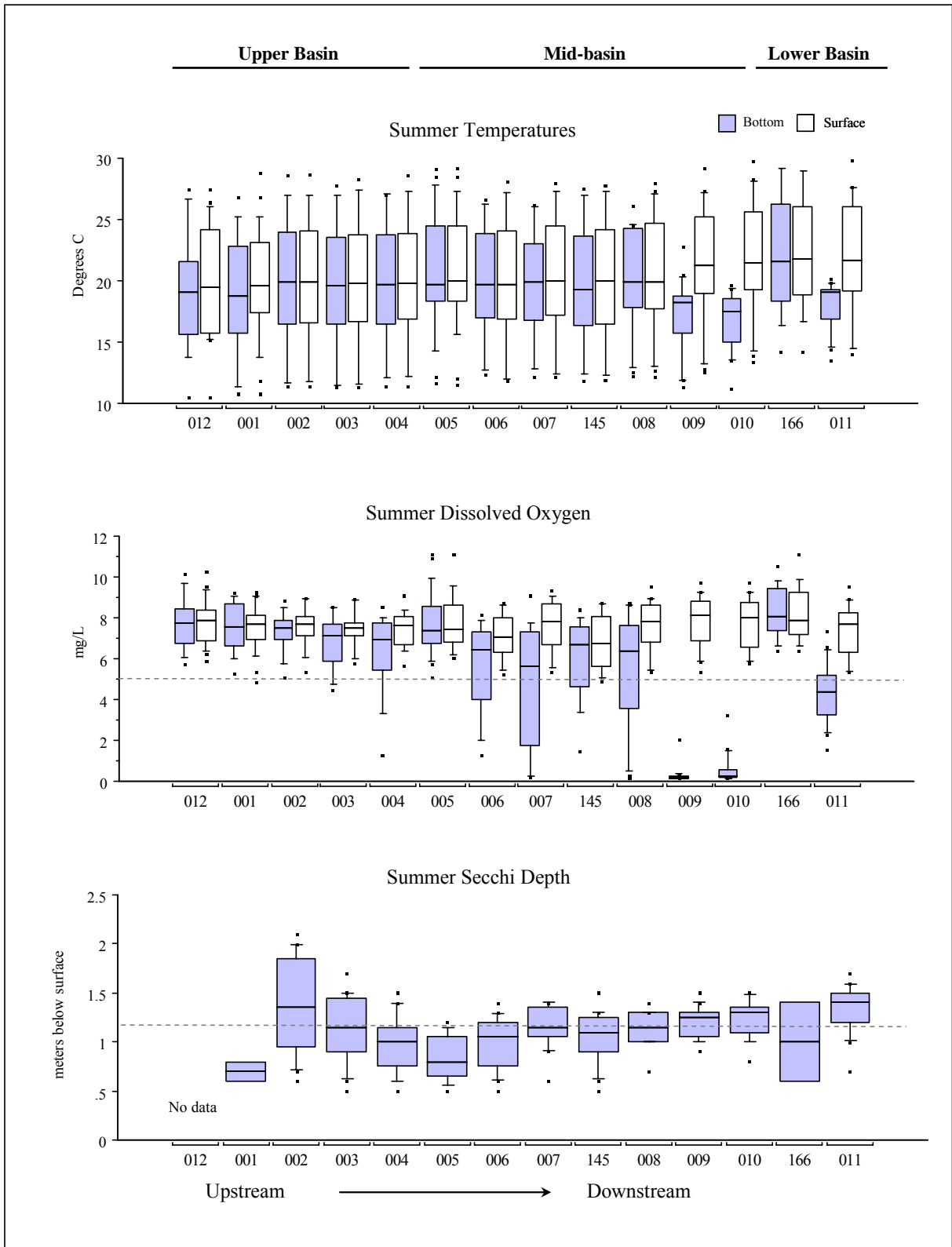


Figure 3-2. Summer temperature, dissolved oxygen, and Secchi depth, Charles River Basin, 2006.

Dashed lines are State standards. No Secchi data is available for Station 012.

